

Pallet Enclosures

Dimensionally exact. Personalized to your needs.

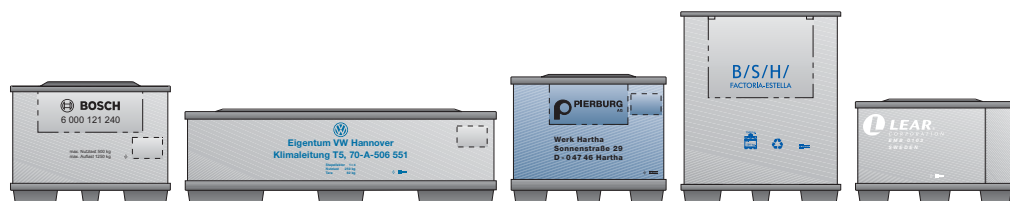
Every TRIPLEX pallet enclosure is made with perfect workmanship and highest quality as ensured by our skilled development and production staff. Made in Germany in exact accordance with your specifications, they are available with minimum delivery time thanks to our highly efficient supply logistics.



Pallet Enclosures: For Secure Storage and Transport – Whatever the Product and Destination

TRIPLEX Kunststoffe GmbH, located in Haiterbach in Germany's beautiful Black Forest, offers a wide selection of stowing, storage and transport containers based on their unique structured-core panel technologies. No matter what the requirements – whatever the shape, colour, size, panel thickness, unloading flap or loading port, with a closure lock or not, collapsible or not, with or without a corporate logo – we can provide the product you need. We offer a multitude of container types made from TRIPLEX 3, 5 or 10 panels including one-way or returnable cartons, crates, bins, pallet boxes and enclosures, all with precise dimensional tolerances and tight-fitting closures. Wide-ranging accessories and options round out the programme, making TRIPLEX pallet enclosures the intelligent solution for reliable transport and logistics.

For more information on TRIPLEX Pallet Enclosures, visit our website at: www.triplex-gmbh.de



TRIPLEX Pallet Enclosures – What Makes Them So Special? They Offer ...

- high quality and durability
- outstanding cost-performance ratio
- in-house specialized production in all process steps
- single-source manufacturing responsibility
- state-of-the-art production processes and machines
- optimum quality and economics, even for customer-specific designs
- solutions to challenging tailor-made designs and personalized solutions
- astoundingly long service life



Pallet Enclosures – Available Options

- custom sizes
- punched holes or ports
- bar codes
- removable front panels
- flat-embossed edges
- electric conductivity
- various unloading flaps
- printing (corporate logos, description of contents, etc.)
- ... or, whatever you request

The available range of options for TRIPLEX pallet enclosures is astonishing – as are the varied needs and special requirements of users. Even within the same industrial sector, different companies looking to improve function and appearance of storage and transport containers come up with highly innovative and unusual ideas: ideas that are waiting for realization. For our customers, we believe that only the best product solutions are good enough. We view your specifications for new and innovative applications as a welcome challenge.





The TRIPLEX Unloading Flap – With the Safety Closure Hinge (SCH)

TRIPLEX safety hinges are known for their outstanding closure tightness, excellent strength and workhorse durability. Their new and improved geometrical shape provides even tighter closing of the flap – exactly flush with the enclosure wall. This no-gap closure ensures dust-free and dry storage and transport.

The advantages of the easy-to-use SCH safety hinge at a glance:

- tight fit of flap when closed ensures clean and dry transport
- extremely strong, withstands rough treatment, outstanding durability as documented by lab testing
- improved stackability due to improved load-bearing strength of unloading flap
- secure positioning of flap in open or closed position
- versions available with open or welded flap edges





The TRIPLEX Unloading Flap – The QuickSlide® Lock (QSL)

Another important component of the closure systems for unloading flaps in TRIPLEX pallet enclosures is their utility-model protected QuickSlide® closure lock which is superior to the hook-and-loop strip fasteners found in conventional pallet enclosures. This innovative polyamide slide closure has snap-closing action which locks it positively and securely in position, preventing inadvertent opening or displacement. Hook-and-loop fastener strips are used only to hold the flap in position when open on the outer surface of the enclosure.

The advantages of the QSL closure lock at a glance:

- slide movement and snap-locking action make for extreme ease of use
- made of rugged, high-impact polycarbonate
- outstanding durability documented in lab testing, no flexural fatigue
- excellent weathering resistance
- no hook-and-loop fastener strips to interfere with tight edge fit
- can be easily retrofitted to existing pallet enclosures
- outstanding value for low purchase cost
- available in small or large quantities



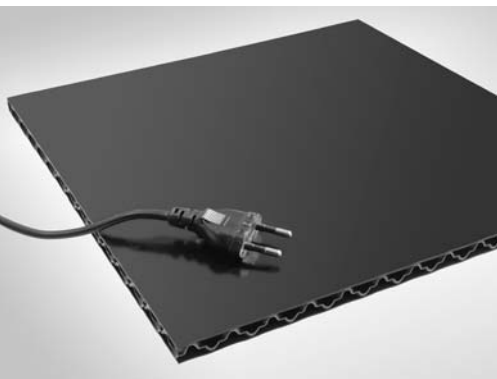
TRIPLEX Pallet Enclosures – For Logistics Professionals and Transport Experts

TRIPLEX polypropylene pallet enclosures are available in a widely popular standard version which is grey in colour with a panel thickness of approx. 10 mm and an area weight of 3000 g/m². Numerous optional features are also available for personalized design in accordance with your specific requirements.

The following options are offered in the basic product range:

- almost any RAL colour, different on inside and outside if desired
- printing on one or more sides in up to 4 colours
- professional layout and printing screen fabrication
- customized panel dimensions, thicknesses and weights
- "O", "C" or "U" design, one or two-part construction
- electrically conductive
- welded edges
- locking slots with open or welded edges
- pallet-specific lid and/or base contours
- unloading flaps with safety closure hinge and QuickSlide® closure lock
- document pouches in standard sizes
- base trays and inserts with various laminates (e.g. foams, textiles, geotextiles)
- personalized compartments

TRIPLEX pallet enclosures fulfil your requirements however demanding they may be. Select from our extensive basic product programme or get a custom-designed solution for your application.

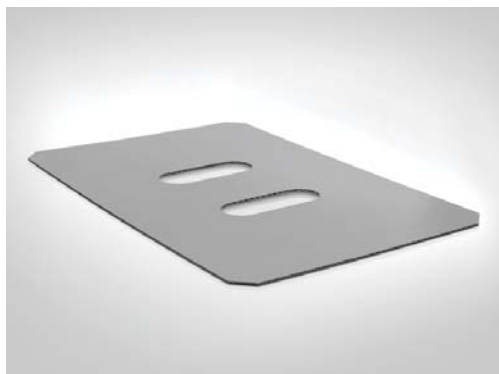
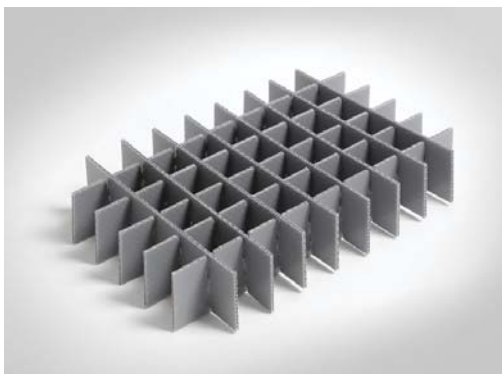


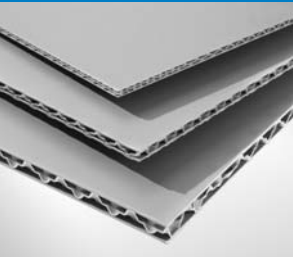


NextLoop Service – Cost-Efficient and Environment-Friendly

TRIPLEX pallet enclosures are known throughout the industry for their outstanding quality and exceptional workmanship. However, while serving well in demanding day-in day-out use, even these premium pallet enclosures can be damaged or in fact destroyed by misuse or improper handling.

Responding to this situation, TRIPLEX is the first manufacturer to offer their exclusive NextLoop service. Whether you decide to repair, recycle or replace the damaged enclosures, you will benefit from this service in several different ways. First, you will realize a further significant reduction in transport packing costs and keep your transport packing systems operative on a permanent basis. In addition, you will make an important contribution to protecting the environment and conserving natural resources. You will also benefit from low repair costs and material cost savings – i.e. your environmental bonus. A further feature: NextLoop services are provided not only for TRIPLEX panels but also for almost all types of similar polypropylene enclosures and panels. Please consult your pallet system distributor for further details.





Our Promise

At TRIPLEX, we focus on coming up with new, surprising ideas – today we're thinking about your requirements for tomorrow. In looking for new ways to solve your problems, we are not afraid to take unconventional paths, relying on imagination for uncommon solutions along with courage to travel uncommon routes. By keeping our eyes open and constantly learning more, we break through barriers and set new standards. True to our roots as a family-owned company, we listen exactly to what you have to say and attach utmost importance to fairness in our business relationships. At TRIPLEX, our employees, customers and suppliers are fully committed with their hearts and their minds and work together as partners.

DIN EN ISO 9001:2000

Certified



TRIPLEX Kunststoffe GmbH

Heinrich-Schickhardt-Straße 1

72221 Haiterbach (Germany)

Telephone: +49 - (0) 74 56 - 93 99-0

Telefax: +49 - (0) 74 56 - 93 99-13

info@triplex-gmbh.de

www.triplex-gmbh.de

